



Promoting Reproductive Health Equity in your Community

Utilizing the Working with Diverse Communities Strategies Guided by Best Practice

OAH/CDC Teen Pregnancy Prevention Conference
May 20, 2013

JSI Research and Training Institute
Myriam Hernandez Jennings
Naomi Clemmons
Jocelyn Chu





JOHN SNOW, INC.
and
JSI RESEARCH & TRAINING INSTITUTE, INC.
Health care consulting in the United States and around the world.

About JSI

30 years of R & T Initiatives

Better-educated consumers who take an active role in managing their health


Informed policy and programmatic decisions for cost and quality improvements

Improved access to health care services

Faster adoption of evidence-based interventions

Enhanced public/private-sector collaborations that improve public health

More efficient organizations and systems



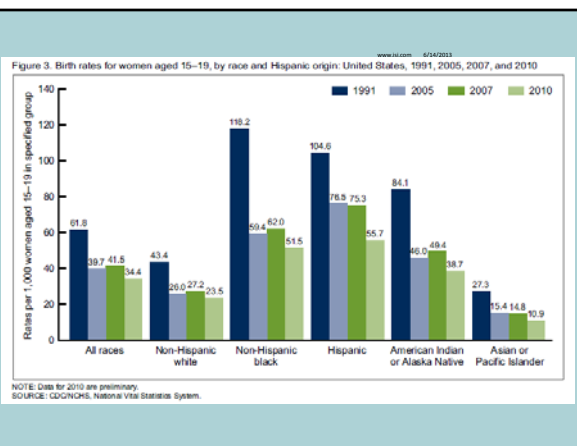
Welcome & Introductions

Session Objectives

1. Describe how to **integrate** a social determinants of health approach to teen pregnancy prevention efforts.
2. Describe the development, purpose and utility of the WDC Strategies Guided by Best Practices
3. Select appropriate tools to assess, select, implement and evaluate the WDC Strategies
4. Understand how the WDC Strategies can be incorporated into current teen pregnancy prevention efforts

Session Outline

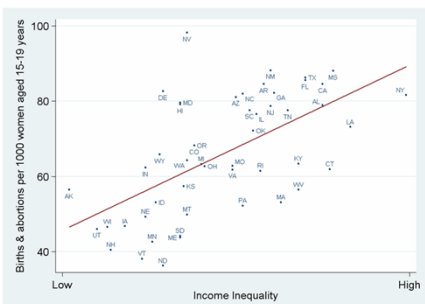
- **Social determinants approach** to teen pregnancy prevention
 - Identifying root causes of teen pregnancy in your community
 - Developing an action plan to address root causes
 - Leveraging partnerships in the community through a multicomponent approach
 - Implementing Strategies Guided by Best Practice to facilitate your action plan



Reproductive Health Equity for Adolescents

- Disparities
 - SES differences
 - Racial/ethnic lines
- Why do disparities persist?
- How to achieve reproductive health equity?

Teen Pregnancy Rates are Higher in More Unequal US States



Source: Wilkinson & Pickett, *The Spirit Level* (2009)

www.equalitytrust.org.uk Equality Trust

Health Equity is achieved when everyone has the opportunity to attain their full health potential and no one is disadvantaged from achieving this potential because of their social position or other socially assigned circumstance

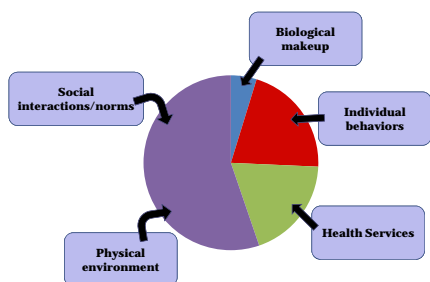
Braveman P, Graden S (2003) Defining Equity in Health. J Epidemiol Community Health, 57, 354-358

Social Determinants

Social determinants of health reflect social factors and the physical conditions in the environment in which people are born, live, learn, play, work and age.

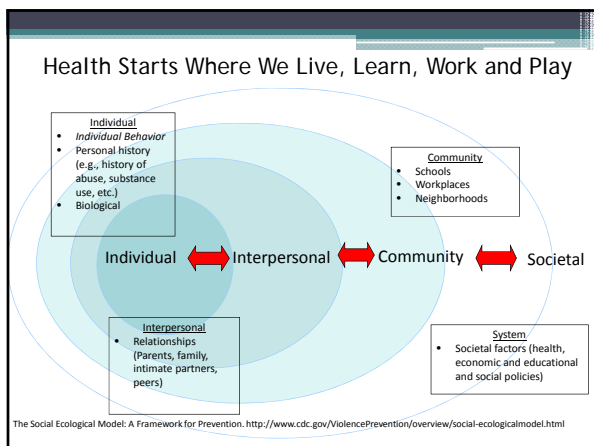
Source: World Health Organization (WHO). Social Determinants of Health. [online]. 2011. http://www.who.int/social_determinants/en/

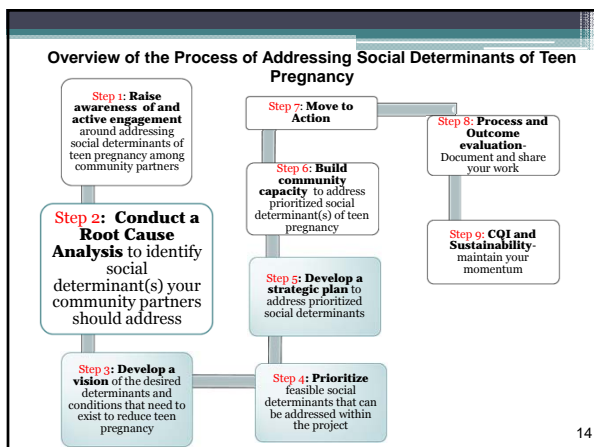
Determinants of Health



Adapted from CDC. <http://www.cdc.gov/socialdeterminants/FAQ.html>

Thinking about your community, what factors influence an adolescent health?

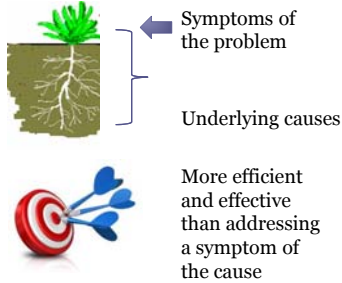




World Cafe

Identifying and Addressing the Root Causes – A Social Determinants Approach to Reproductive Health Equity

Root Cause Analysis: the What and Why?



What's the purpose?

- To identify the contributing factors and underlying causes of teen pregnancy in your community
- To plan and prioritize strategies to address the root causes of teen pregnancy in your community

What's the process?

- Identify stakeholders
- Identify root causes:
 - Factors that are related to teen pregnancy
 - Factors that can help reduce the risk of teen pregnancy
- Develop an Action Plan to address Root Causes of Teen Pregnancy

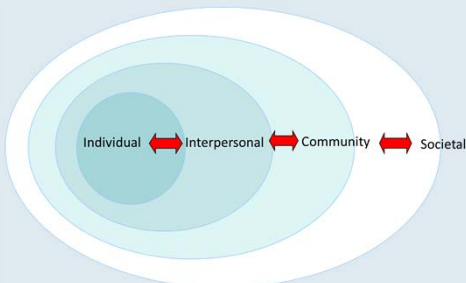
Who's at the table?

- Convene a multisector group of stakeholders
 - Direct service providers (providers, health educators, staff from youth serving organization)
 - Youth representing various populations in the community
 - Community residents impacted by teen pregnancy (parenting teens, parents, grandparents)
 - Community leaders
 - School department
 - Faith-based organizations
 - Non-traditional stakeholders
 - Businesses, departments of housing, transportation, parks and recreation, ethnic/cultural organizations

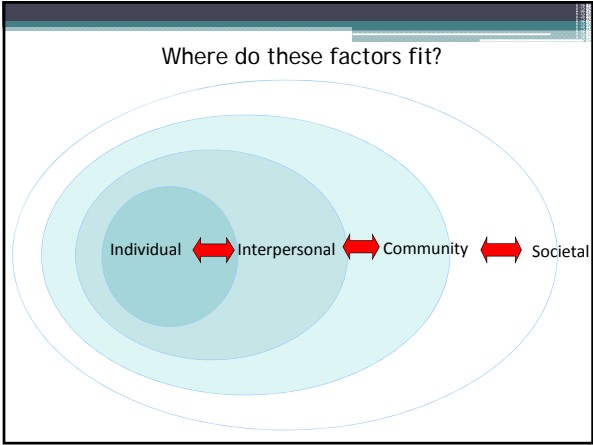
Why do you think teens get pregnant in your community?

What factors are related to teen pregnancy in your community?

Where do these factors fit?



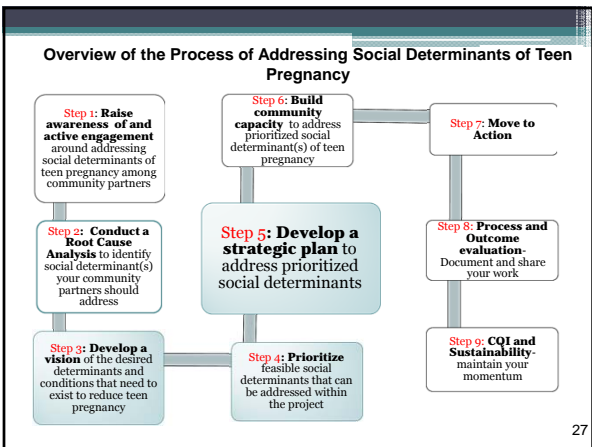
What factors could help reduce teen pregnancy in your community?



BREAK

GALLERY WALK
~ what were your observations?

Developing an Action Plan to
Address Root Causes of
Teen Pregnancy



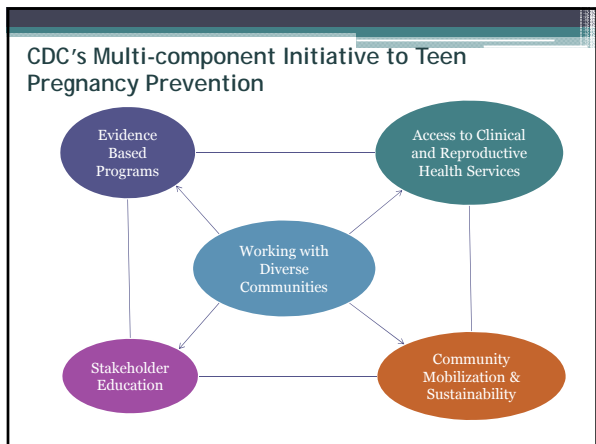
- 1) Consider “leverage points”
 - a. Which factors are highly related or inter-connected with each other
- 2) Prioritize feasible determinants
- 3) Plan for action

Action Planning Process

Root Causes/ Contributing Factors	Potential intervention strategies to address root causes/factors	Resources available to implement strategies	Resources not available but needed to implement strategies	What do we need to know more about?	Immediate Next Steps
Absence of parent-child communication about sex	Parent workshops to build their communication skills around taboo issues with their teens	Space to conduct parent workshops and experienced staff	Parents of teens from our target population who would be willing to participate in workshops	How can we best reach parents of the teens we target?	Follow-up with pastors of churches and school representatives to develop parent outreach plan
Lack of career training & development programs for adolescents	Businesses in the community to provide jobs and shadowing opportunities for young people to be exposed to different career paths	Buy-in from a local bank to offer shadowing opportunities in finance and banking	More local businesses and organizations in the community interested in investing in a career development program for young people	How to build a sustainable infrastructure that offers young people opportunities to experience different careers and learn how to take next steps	Identify local businesses and corporations to gain buy-in; organize a meeting to develop a coordinated career training program

DEBRIEF

- ~What did the process make you think about?
- ~ What did you identify?
- ~ What was hard about this process?



World Cafe

Implementing the Strategies Guided by Best Practice

Strategies Guided by Best Practice

- What are they?
- What is their purpose?
- Why implement?
- How to use?

Underlying Theme	Strategy Number
engage diverse youth	1-7
utilize participatory approaches for community mobilization	8-15
engage a diverse group of community partners to participate in TPP efforts	16-18
supplement EBI implementation to better serve diverse youth	19-26
culturally competent clinical services	27-33
community outreach practices	34-37

Consider the root cause and related intervention that you identified earlier...

Which strategies would you choose to enhance the intervention that you are planning?

Describe how these strategies could be implemented in your community

What are some challenges you might anticipate?

How would you know if the strategy was implemented successfully?

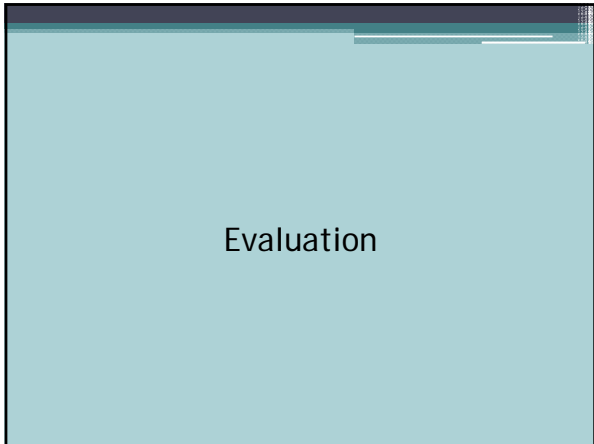
What are some indicators of success?

REFLECTION









Evaluation



Contact us

JSI Research & Training Institute, Inc.
44 Farnsworth St.
Boston, MA 02210
website: <http://rhey.jsi.com/>
Email: mjennings@jsi.com
Phone: (617) 482-9485
Fax: (617) 482-0617
